



The Advance® 3000 design meets requirements of low flow, higher head applications as compared to the Advance® 1000 legacy series.

- Use of Noryl® resin for wetted parts enables this strong, durable, versatile unit to cover a broad range of fluid applications.
- The patented Impenatra® Seal properly handles challenging applications at a fraction of the cost of exotic alloys, by preventing fluids contact with metal parts.
- Multiple drain locations allow for several discharge orientations.

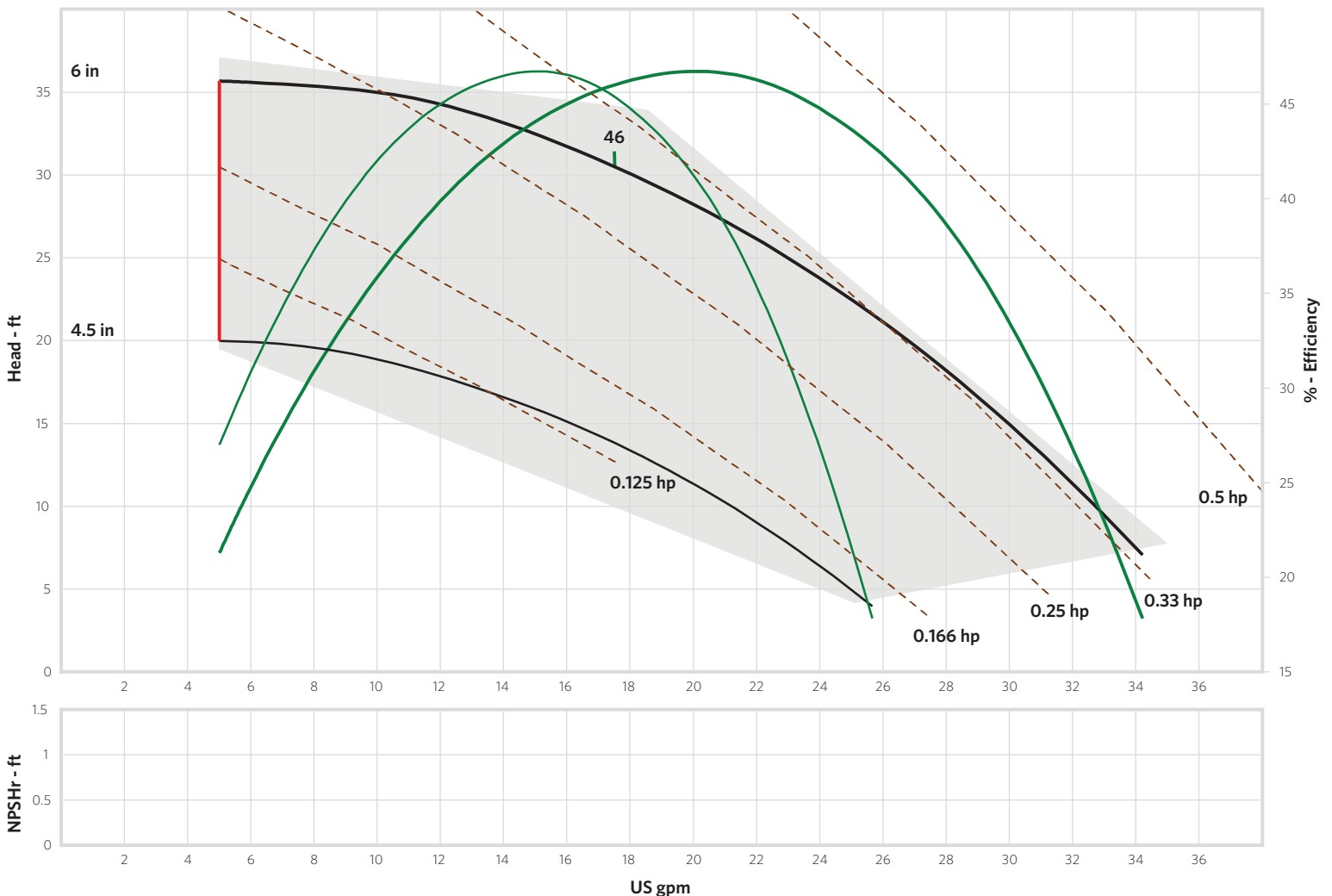
**Performance Envelope**

- 35 GPM
- 36 Head
- 47% Peak Efficiency

Advance® 3000 4 Pole Full / Minimum Diameter Performance Curve

Speed: 1750 rpm

Size: 3000.054



**Pump:**

Size: 054  
 Type: Advance 3000  
 Synch speed: 1800 rpm  
 Curve: 011205-4  
 Specific Speeds:  
 Ns: 517  
 Nss: ---  
 Dimensions:  
 Suction: 1.5 in  
 Discharge: 0.75 in

**Search Criteria:**

Flow: --- Head: ---

**Fluid:**

Water  
 SG: 1  
 Viscosity: 1.105 cP  
 NPSHa: ---  
 Temperature: 60 °F  
 Vapor pressure: 0.2563 psi a  
 Atm pressure: 14.7 psi a

**Motor:**

Standard: NEMA  
 Enclosure: TEFC  
 Sizing criteria: Max Power on Design Curve  
 Size: 0.5 hp  
 Speed: 1800  
 Frame: 56J

**Pump Limits:**

Temperature: 180 °F  
 Pressure: 100 psi g  
 Sphere size: 0.72 in  
 Power: ---  
 Eye area: ---

**---- Data Point ----**

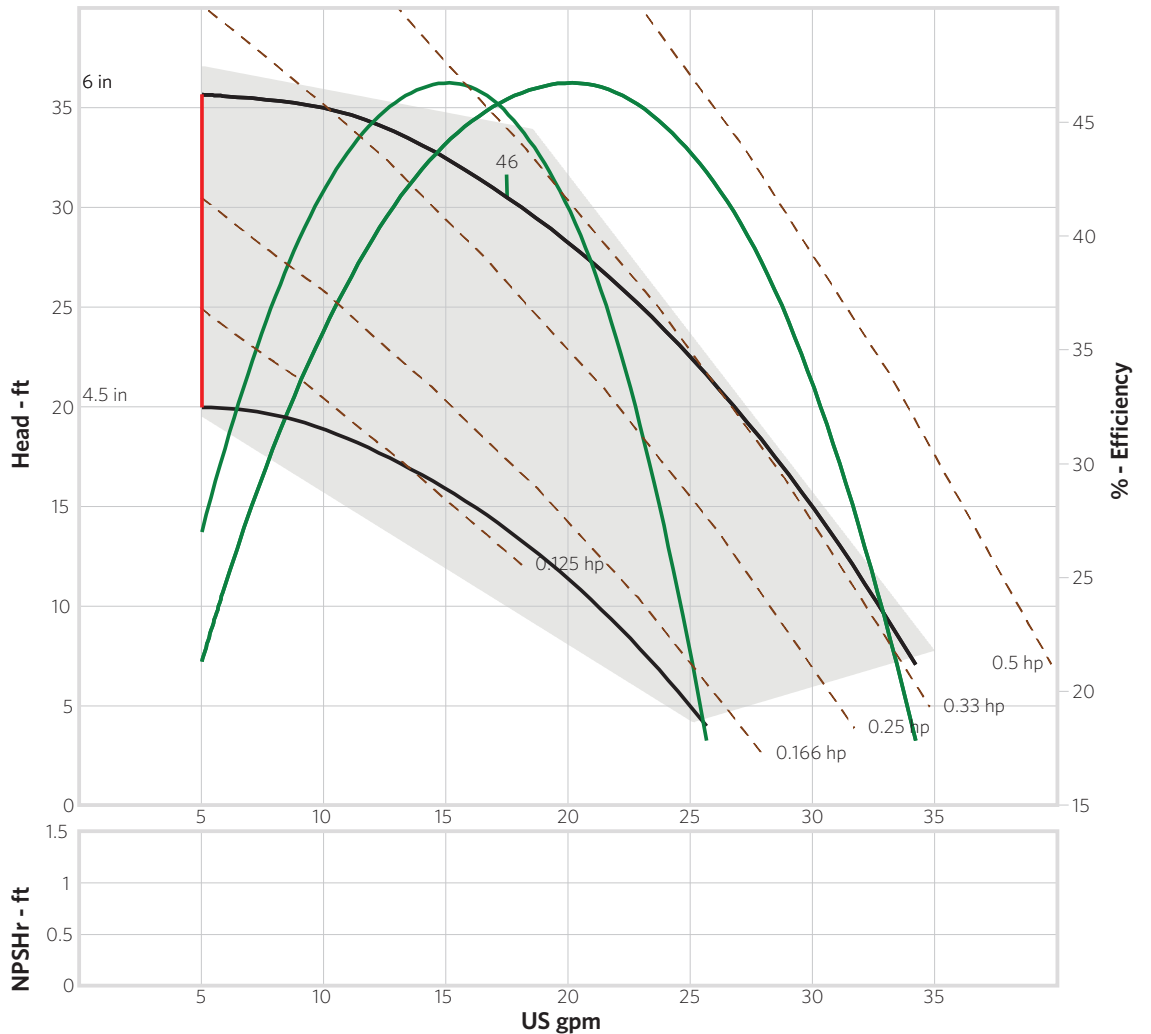
Flow: 17.5 US gpm  
 Head: 30.5 ft  
 Eff: 46%  
 Power: 0.293 hp  
 NPSHr: ---

**---- Design Curve ----**

Shutoff head: 35.6 ft  
 Shutoff dP: 15.4 psi  
 Min flow: 5 US gpm  
 BEP: 46% @ 17.5 US gpm  
 NOL power:  
 0.342 hp @ 34.2 US gpm

**-- Max Curve --**

Max power:  
 0.342 hp @ 34.2 US gpm



**Performance Evaluation:**

Flow US gpm	Speed rpm	Head ft	Efficiency %	Power hp	NPSHr ft
32.9	1750	9.45	22.4	0.34	---
27.4	1750	18.9	38.8	0.331	---
21.9	1750	26	45.5	0.313	---
16.4	1750	31.2	44.7	0.286	---
11	1750	34.5	37.5	0.253	---



The Advance® 3000 design meets requirements of low flow, higher head applications as compared to the Advance® 1000 legacy series.

- Use of Noryl® resin for wetted parts enables this strong, durable, versatile unit to cover a broad range of fluid applications.
- The patented Impenatra® Seal properly handles challenging applications at a fraction of the cost of exotic alloys, by preventing fluids contact with metal parts.
- Multiple drain locations allow for several discharge orientations.

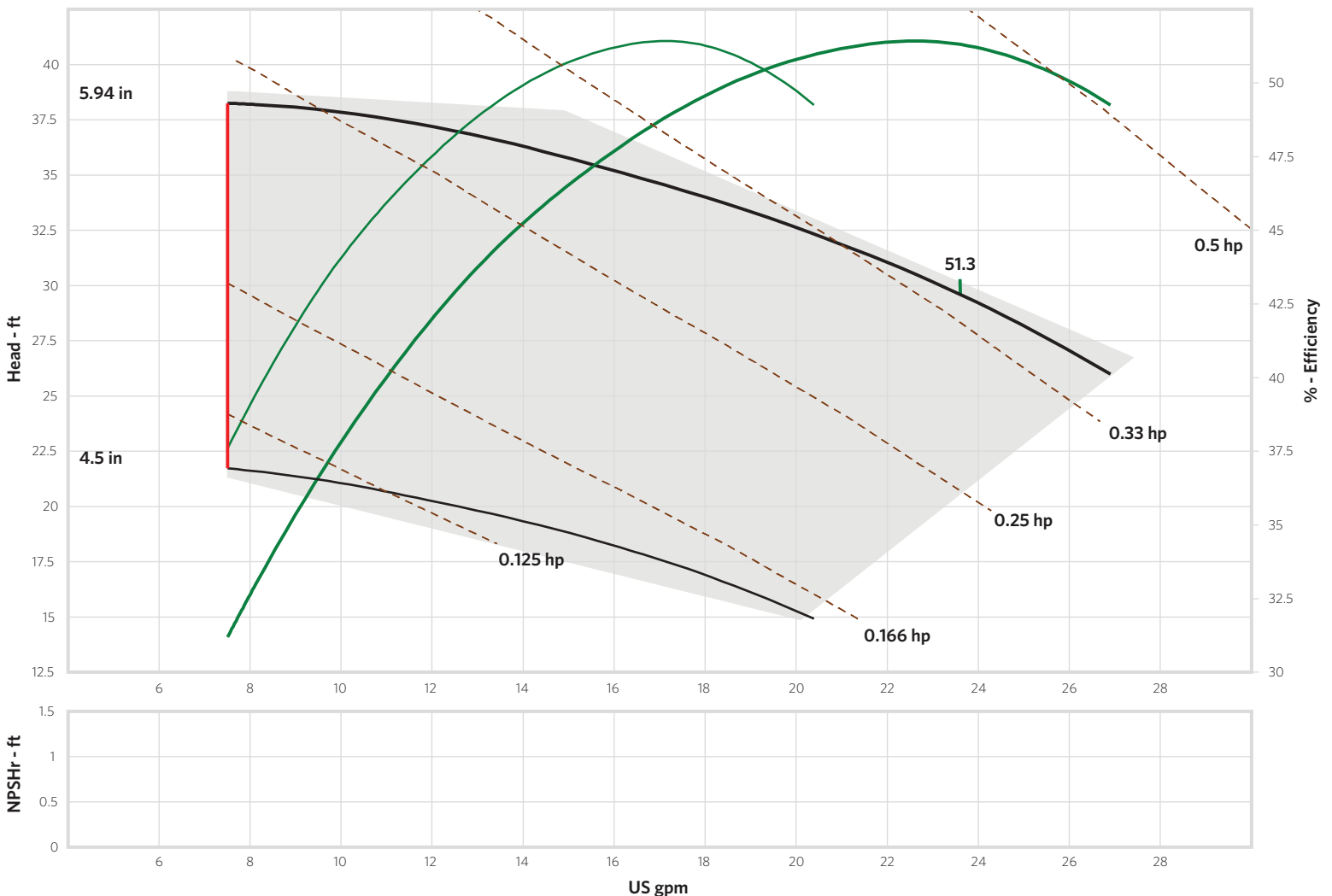
**Performance Envelope**

- 27 GPM
- 38' Head
- 52% Peak Efficiency

Advance® 3000 4 Pole Full / Minimum Diameter Performance Curve

Speed: 1750 rpm

Size: 3000.055



**Pump:**

Size: 055  
 Type: Advance 3000  
 Synch speed: 1800 rpm  
 Curve: 011204-9  
 Specific Speeds:  
 Ns: 602  
 Nss: ---  
 Dimensions:  
 Suction: 1.5 in  
 Discharge: 0.75 in

**Search Criteria:**

Flow: --- Head: ---

**Fluid:**

Water  
 SG: 1  
 Viscosity: 1.105 cP  
 NPSHa: ---  
 Temperature: 60 °F  
 Vapor pressure: 0.2563 psi a  
 Atm pressure: 14.7 psi a

**Motor:**

Standard: NEMA  
 Enclosure: TEFC  
 Sizing criteria: Max Power on Design Curve  
 Size: 0.5 hp  
 Speed: 1800  
 Frame: 56J

**Pump Limits:**

Temperature: 180 °F  
 Pressure: 100 psi g  
 Sphere size: 0.22 in  
 Power: ---  
 Eye area: ---

**---- Data Point ----**

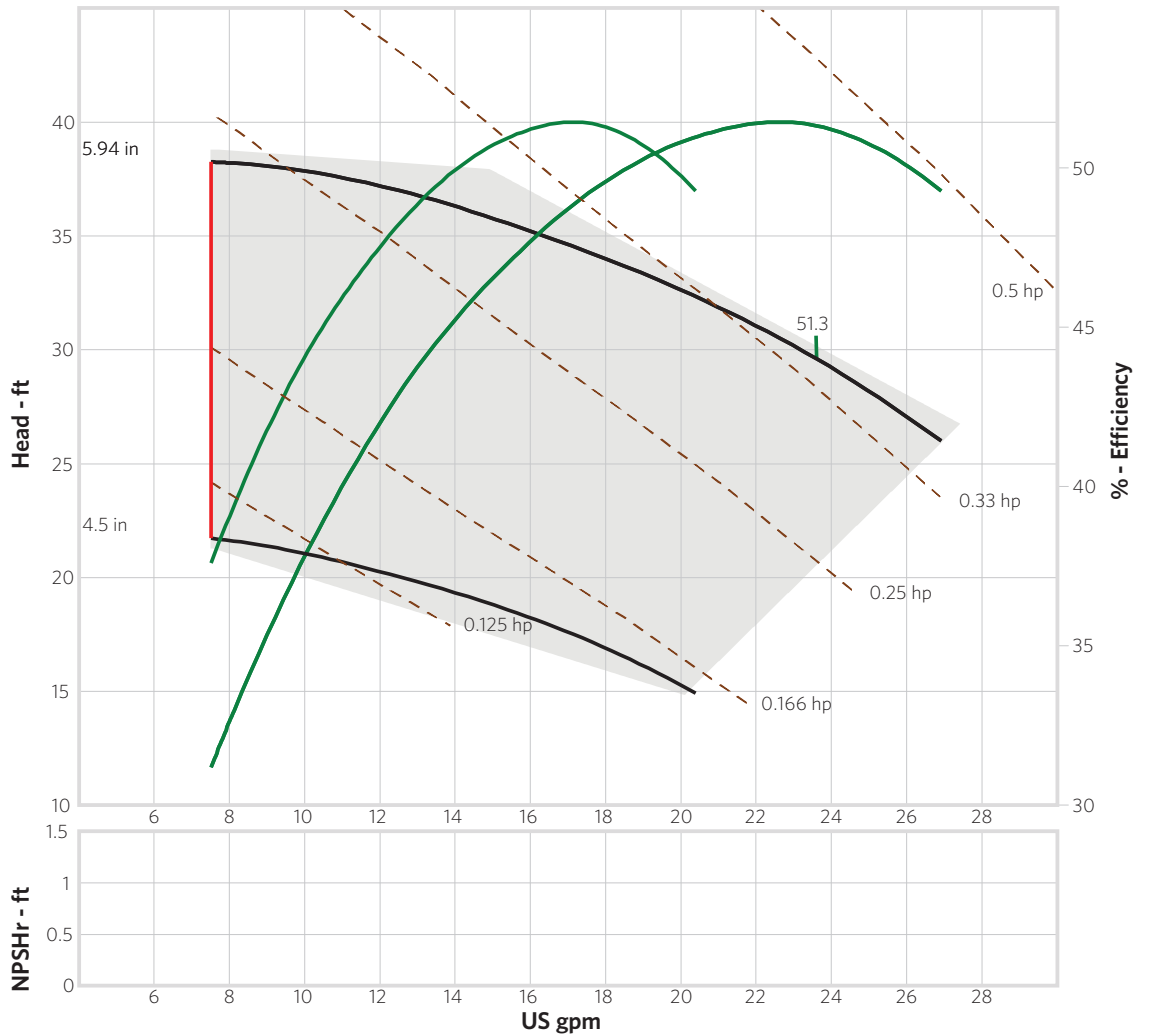
Flow: 23.6 US gpm  
 Head: 29.6 ft  
 Eff: 51.3%  
 Power: 0.344 hp  
 NPSHr: ---

**---- Design Curve ----**

Shutoff head: 37.4 ft  
 Shutoff dP: 16.2 psi  
 Min flow: 7.5 US gpm  
 BEP: 51.3% @ 23.6 US gpm  
 NOL power:  
 0.359 hp @ 26.9 US gpm

**-- Max Curve --**

Max power:  
 0.359 hp @ 26.9 US gpm



**Performance Evaluation:**

Flow US gpm	Speed rpm	Head ft	Efficiency %	Power hp	NPSHr ft
25.8	1750	27.2	49.9	0.354	---
21.5	1750	31.4	51.1	0.333	---
17.2	1750	34.4	48.5	0.306	---
12.9	1750	36.8	43.5	0.275	---
8.6	1750	38.1	34.1	0.241	---



The Advance® 3000 design meets requirements of low flow, higher head applications as compared to the Advance® 1000 legacy series.

- Use of Noryl® resin for wetted parts enables this strong, durable, versatile unit to cover a broad range of fluid applications.
- The patented Impenatra® Seal properly handles challenging applications at a fraction of the cost of exotic alloys, by preventing fluids contact with metal parts.
- Multiple drain locations allow for several discharge orientations.

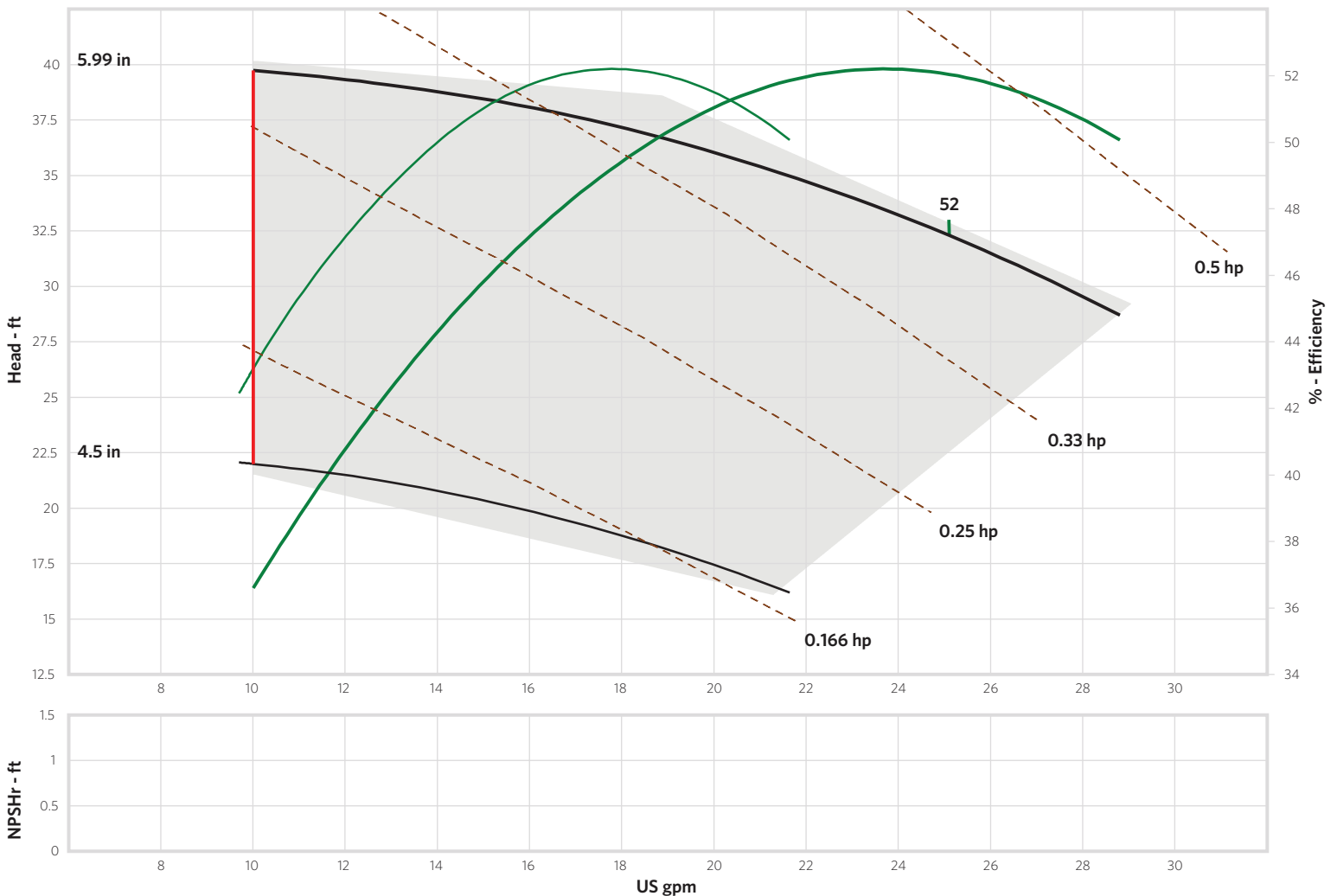
**Performance Envelope**

- 29 GPM
- 40 Head
- 53% Peak Efficiency

Advance® 3000 4 Pole Full / Minimum Diameter Performance Curve

Speed: 1750 rpm

Size: 3000.056



**Pump:**

Size: 056  
 Type: Advance 3000  
 Synch speed: 1800 rpm  
 Curve: 011204-1  
 Specific Speeds:  
 Dimensions:  
 Speed: 1750 rpm  
 Dia: 5.99 in  
 Impeller: 3000.056  
 Ns: 620  
 Nss: ---  
 Suction: 1.5 in  
 Discharge: 0.75 in

**Search Criteria:**

Flow: --- Head: ---

**Fluid:**

Water  
 SG: 1  
 Viscosity: 1.105 cP  
 NPSHa: ---  
 Temperature: 60 °F  
 Vapor pressure: 0.2563 psi a  
 Atm pressure: 14.7 psi a

**Motor:**

Standard: NEMA  
 Enclosure: TEFC  
 Sizing criteria: Max Power on Design Curve  
 Size: 0.5 hp  
 Speed: 1800  
 Frame: 56J

**Pump Limits:**

Temperature: 180 °F  
 Pressure: 100 psi g  
 Sphere size: 0.3 in  
 Power: ---  
 Eye area: ---

**---- Data Point ----**

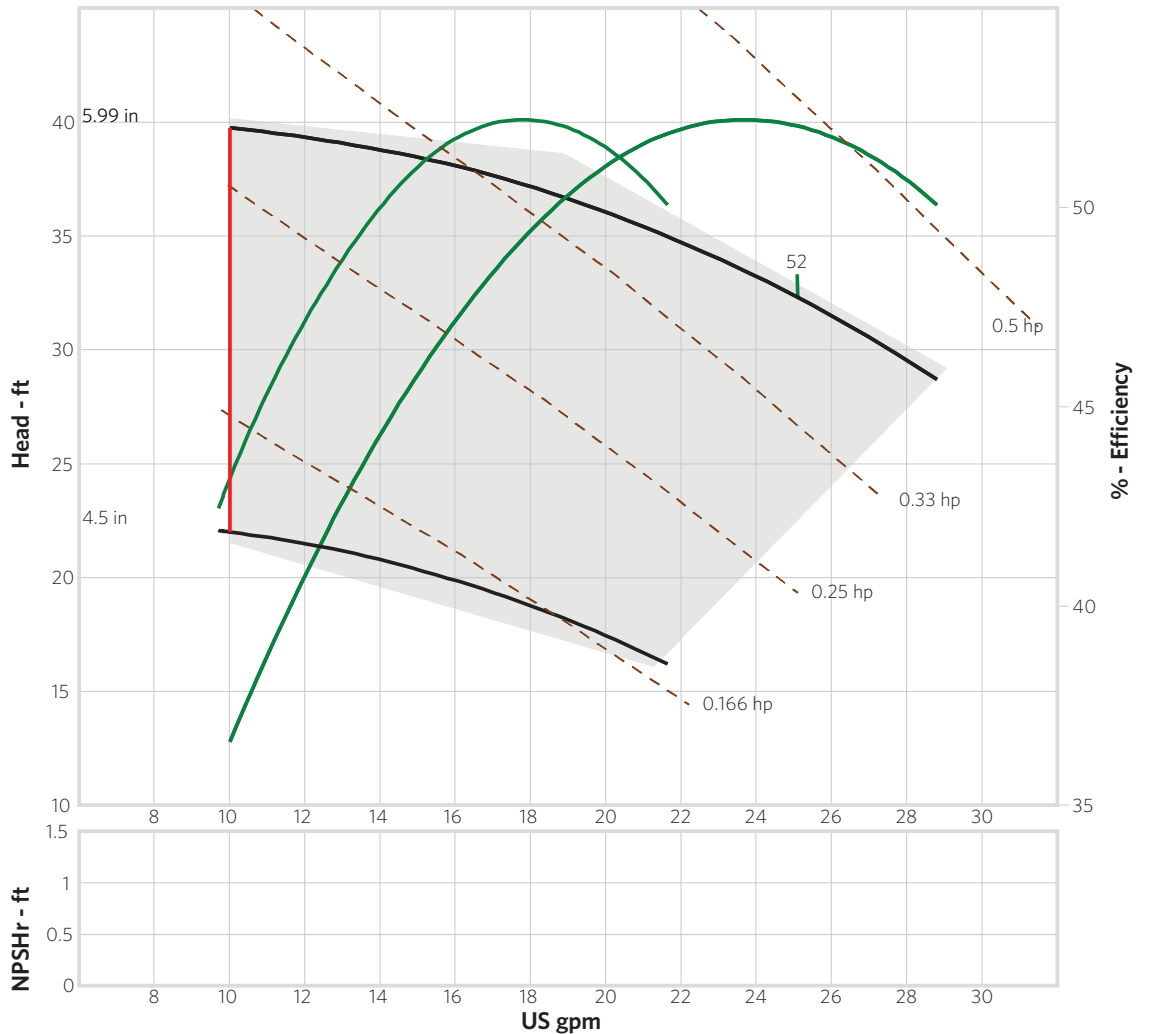
Flow: 25.1 US gpm  
 Head: 32.3 ft  
 Eff: 52%  
 Power: 0.393 hp  
 NPSHr: ---

**---- Design Curve ----**

Shutoff head: 38 ft  
 Shutoff dP: 16.5 psi  
 Min flow: 10 US gpm  
 BEP: 52% @ 25.1 US gpm  
 NOL power:  
 0.417 hp @ 28.8 US gpm

**-- Max Curve --**

Max power:  
 0.417 hp @ 28.8 US gpm



**Performance Evaluation:**

Flow US gpm	Speed rpm	Head ft	Efficiency %	Power hp	NPSHr ft
27.6	1750	29.9	50.7	0.409	---
23	1750	33.9	51.8	0.378	---
18.4	1750	36.9	49.5	0.345	---
13.8	1750	38.8	43.8	0.308	---
9.2	1750	---	---	---	---